

RIBBECK SLIM CUP



Biodynamics medical technology is the centre of excellence in the area of endoprosthetics and is specialised in joint implants and instruments.



CUSTOMER ORIENTATION AS A MATTER OF PRINCIPLE

We stand for medical devices based on the latest medical and technical developments. Extensive investments in high-tech facilities in the past years have enabled us to work with innovative procedures today. High-quality materials guarantee the quality our customers expect from us.

We have also applied our comprehensive knowledge in the field of endoprosthetics to develop our own OEM product range: Customer-oriented implant systems and instruments for a dependable supply of standard products.

Many of our customers complement their range of products with these systems. They rely on market-ready products which ensure an optimal combination of state-of-the-art medical standards with cost-effectiveness and flexibility. Over many decades of use, the implants have been shown to be safe.

All components are supplied in sterile packaging and labelled - in your individual packaging design, if desired. Combined with the surgical instruments, which are synchronised exactly with the implants, we provide a complete package.

For more than 75 years, quality, cost-effectiveness and reliability have formed the cornerstone of our continued success.



RIBBECK SLIM CUP

The Ribbeck Slim Hip Cup,
for cementless fixation in the
acetabulum



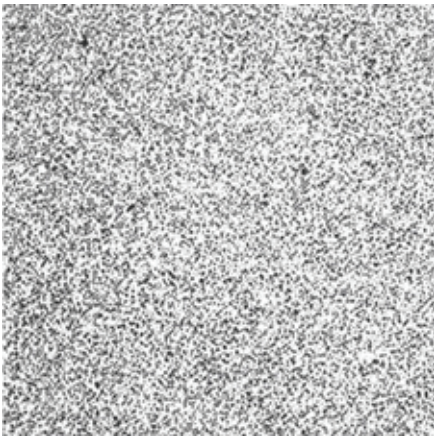
PRODUCT DESCRIPTION

The modular Ribbeck Slim Hip Cup System is meant for cementless fixation in the acetabulum. The spherical outer cup with flattening of the poles is made of TiAl6V4 alloy (ISO 5832-3). The surface is rough blasted. Polyethylene inlays as UHMWPE standard and XL-PE (highly cross-linked) versions are available for the Ribbeck Slim Cup. A dysplasia inlay is also available.

For each cup size there is a separate inlay with different femoral head diameters. This allows low wall thickness. Primary stability is achieved by a dynamic press-fit mechanism. Position marks on the plane surface of the cup allow the alignment of the screw drill holes in the cranio-lateral direction.

RIBBECK SLIM CUP

TiAl6V4, ISO 5832-3



TiAl6V4 ISO 5832-3

The Ribbeck Slim Cup is made of TiAl6V4 wrought alloy in accordance with ISO 5832-3. Its high fatigue strength and elasticity make this material particularly suitable for the manufacture of hip endoprostheses. The material is tolerated very well by the tissue thanks to its excellent biocompatibility.



The titanium alloy allows the cup to join with the surrounding bone to become a solid and very strong supporting unit, thus supporting growth of the implant into the bone. The TiAl6V4 wrought alloy meets the special requirements applicable to the manufacture of a hip implant including resistance to corrosion, tissue compatibility, vitality and elasticity to a high degree.

TiAl6V4, ISO 5832-3

Ribbeck Slim Cup



Ribbeck Slim Cup, rough blasted
Delivered state including cover plate

Size	Article no.
ø 42 mm	0270-42
ø 44 mm	0270-44
ø 46 mm	0270-46
ø 48 mm	0270-48
ø 50 mm	0270-50
ø 52 mm	0270-52
ø 54 mm	0270-54
ø 56 mm	0270-56
ø 58 mm	0270-58
ø 60 mm	0270-60
ø 62 mm	0270-62
ø 64 mm	0270-64
ø 66 mm	0270-66
ø 68 mm	0270-68



Cover plates

Amount	Article no.
3 units	367-1019



Flat head screw, ISO 5832-3
TiAl6V4 self-tapping, Ø 6.5 mm

Length	Article no.
15 mm	000-290-15
20 mm	000-290-20
25 mm	000-290-25
30 mm	000-290-30
35 mm	000-290-35
40 mm	000-290-40
45 mm	000-290-45
50 mm	000-290-50
55 mm	000-290-55
60 mm	000-290-60



WE RE COMMEND

A complete system: Ribbeck Slim Cup
rough blasted, a XL PE inlay,
ELEC ® ceramic femoral Head and
the SPC Hip Stem

UHMWPE, ISO 5834-2

Ribbeck Slim Cup Inlays



Ribbeck Slim PE Inlay
Standard 0°
UHMWPE, ISO 5834-2

Size		Standar d	Article no.
42	ø 22 mm	0°	2300-22-42
44	ø 22 mm	0°	2300-22-44
42–44	ø 28 mm	0°	0271-42/44
46	ø 28 mm	0°	0271-46
48	ø 28 mm	0°	0271-48
50	ø 28 mm	0°	0271-50
52	ø 28 mm	0°	0271-52
54	ø 28 mm	0°	0271-54
56	ø 28 mm	0°	0271-56
58	ø 28 mm	0°	0271-58
60	ø 28 mm	0°	0271-60
62	ø 28 mm	0°	0271-62
64	ø 28 mm	0°	0271-64
66	ø 28 mm	0°	0271-66
68	ø 28 mm	0°	0271-68
48	ø 32 mm	0°	0243-48
50	ø 32 mm	0°	0243-50
52	ø 32 mm	0°	0243-52
54	ø 32 mm	0°	0243-54
56	ø 32 mm	0°	0243-56
58	ø 32 mm	0°	0243-58
60	ø 32 mm	0°	0243-60
62	ø 32 mm	0°	0243-62
64	ø 32 mm	0°	0243-64
66	ø 32 mm	0°	0243-66
68	ø 32 mm	0°	0243-68

PRODU CT DES CRIPTION

As sliding partners for the femoral head, inlays made of UHMWPE (ISO 5834-2) can be used.

We offer you inlays in a UHMWPE standard and also an XL-PE variant.

The XL-PE inlays are made of highly cross-linked UHMWPE. This material reduces friction and can thus prolong the standing time of the implant.

The inlay types are available as variants for retaining various femoral head sizes, and also in a dysplasia variant of the polyethylene inlays. The inlays are fixated into the outer cup by means of a snap-on mechanism. All inlay types have a very high rotational stability and are also protected from dislocation.



Ribbeck Slim PE Inlay
Dysplasia 10° and 15°
UHMWPE, ISO 5834-2

Size		Dysplasia	Article no.
42	ø 22 mm	10°	2303-22-42
44	ø 22 mm	10°	2303-22-44
42–44	ø 28 mm	10°	0272-42/44
46	ø 28 mm	10°	0272-46
48	ø 28 mm	10°	0272-48
50	ø 28 mm	10°	0272-50
52	ø 28 mm	10°	0272-52
54	ø 28 mm	10°	0272-54
56	ø 28 mm	10°	0272-56
58	ø 28 mm	10°	0272-58
60	ø 28 mm	10°	0272-60
62	ø 28 mm	10°	0272-62
64	ø 28 mm	10°	0272-64
66	ø 28 mm	10°	0272-66
68	ø 28 mm	10°	0272-68
48	ø 32 mm	15°	0244-48
50	ø 32 mm	15°	0244-50
52	ø 32 mm	15°	0244-52
54	ø 32 mm	15°	0244-54
56	ø 32 mm	15°	0244-56
58	ø 32 mm	15°	0244-58
60	ø 32 mm	15°	0244-60
62	ø 32 mm	15°	0244-62
64	ø 32 mm	15°	0244-64
66	ø 32 mm	15°	0244-66
68	ø 32 mm	15°	0244-68



Ribbeck Slim XL-PE Inlay
Standard 0°
XL-PE 75

Size		Standar d	Article no.
42	ø 22 mm	0°	367-642
44	ø 22 mm	0°	367-644
42–44	ø 28 mm	0°	367-645
46	ø 28 mm	0°	367-646
48	ø 28 mm	0°	367-648
50	ø 28 mm	0°	367-650
52	ø 28 mm	0°	367-652
54	ø 28 mm	0°	367-654
56	ø 28 mm	0°	367-656
58	ø 28 mm	0°	367-658
60	ø 28 mm	0°	367-660
62	ø 28 mm	0°	367-662
64	ø 28 mm	0°	367-664
66	ø 28 mm	0°	367-666
68	ø 28 mm	0°	367-668
48	ø 32 mm	0°	367-248
50	ø 32 mm	0°	367-250
52	ø 32 mm	0°	367-252
54	ø 32 mm	0°	367-254
56	ø 32 mm	0°	367-256
58	ø 32 mm	0°	367-258
60	ø 32 mm	0°	367-260
62	ø 32 mm	0°	367-262
64	ø 32 mm	0°	367-264
66	ø 32 mm	0°	367-266
68	ø 32 mm	0°	367-268
54	ø 36 mm	0°	367-454
56	ø 36 mm	0°	367-456
58	ø 36 mm	0°	367-458
60	ø 36 mm	0°	367-460
62	ø 36 mm	0°	367-462
64	ø 36 mm	0°	367-464
66	ø 36 mm	0°	367-466
68	ø 36 mm	0°	367-468

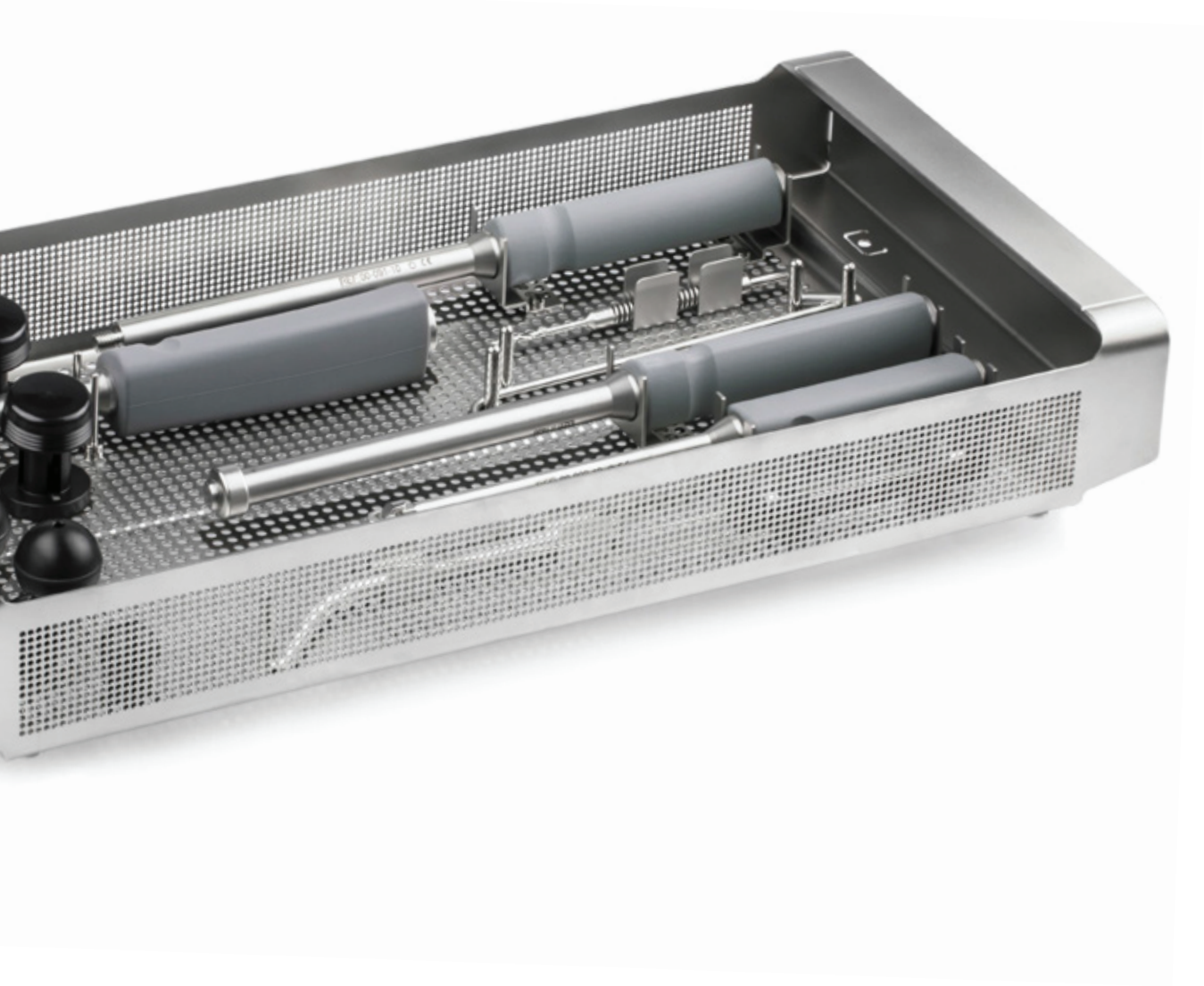


Ribbeck Slim XL-PE Inlay
Dysplasia 10° and 15°
XL-PE 75

Size		Dysplasia	Article no.
42	ø 22 mm	10°	367-742
44	ø 22 mm	10°	367-744
42–44	ø 28 mm	10°	367-745
46	ø 28 mm	10°	367-746
48	ø 28 mm	10°	367-748
50	ø 28 mm	10°	367-750
52	ø 28 mm	10°	367-752
54	ø 28 mm	10°	367-754
56	ø 28 mm	10°	367-756
58	ø 28 mm	10°	367-758
60	ø 28 mm	10°	367-760
62	ø 28 mm	10°	367-762
64	ø 28 mm	10°	367-764
66	ø 28 mm	10°	367-766
68	ø 28 mm	10°	367-768
48	ø 32 mm	15°	367-348
50	ø 32 mm	15°	367-350
52	ø 32 mm	15°	367-352
54	ø 32 mm	15°	367-354
56	ø 32 mm	15°	367-356
58	ø 32 mm	15°	367-358
60	ø 32 mm	15°	367-360
62	ø 32 mm	15°	367-362
64	ø 32 mm	15°	367-364
66	ø 32 mm	15°	367-366
68	ø 32 mm	15°	367-368
54	ø 36 mm	15°	367-554
56	ø 36 mm	15°	367-556
58	ø 36 mm	15°	367-558
60	ø 36 mm	15°	367-560
62	ø 36 mm	15°	367-562
64	ø 36 mm	15°	367-564
66	ø 36 mm	15°	367-566
68	ø 36 mm	15°	367-568

RIBBECK SLIM CUP
INSTRUMENT SET

Optimised Instrument sets
ensure a safe surgical
procedure.



RIBBECK SLIM CUP
BASIC INSTRUMENT SET

The Ribbeck Slim instrument set contains all instruments for insertion of the cup, the inlay and the flat head screw. The instruments contained in the set are equipped with ergonomic silicone grips that enable facilitate easy handling and meet all cleaning and sterilisation requirements.

ACETABULUM REAMER

Precise acetabulum reamers ensure a clean implant bed in preparation for insertion of cemented and cementless acetabular cups. For cementless implantable acetabular cups, the reamer size is the same size as the implant. A press-fit mechanism (slight overdimension) is taken into consideration in the cup component.

EQUATORIAL SIZE TESTER

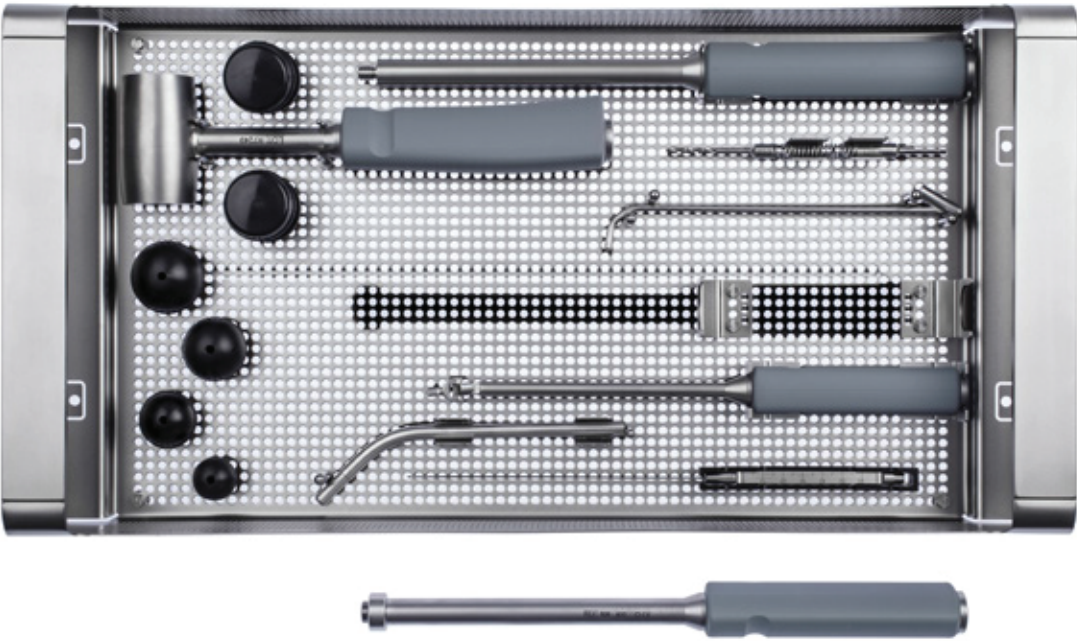
Our equatorial size testers with a 3-spoke design provide a good view of the implant bed and thus ensure accurate testing of the size of the acetabulum. Available in step ranges of 2 mm, our size testers are designed to fit our acetabular cups. The handle is attached by means of a thread. This is easy to understand and facilitates a rapid change of size.



Both the basic instrument set as well as the acetabulum reamers and the equatorial size testers can be supplied in our Monolite trays. The instrument trays are crafted out of a single piece and are made of premium grade stainless steel. Their high thermal and chemical resilience and the use of the transport covers as cover plates make cleaning and sterilisation particularly easy. The system is characterised by its light weight and can be stacked as desired. The individual positioning of the retaining elements in the hole matrix ensure a smooth workflow during any surgical procedure. The trays are equipped with a shaded layout to facilitate the arrangement of the instruments.

Art. no. 367-144

Instrument set for Ribbeck Slim Cup



WE RE COMMEND
Goniometer | Art. no. 506-010

Use the positioning guide to securely position the Ribbeck Slim Cup. This is placed onto the cup inserter (s. p. 15 top left).

Hammer

Art. no. 506-072 | Length: 250 mm, weight: 1100 g



PE inlay impactor handle

Art. no. 00-091-10 | Length: 310 mm



Cardan screwdriver

Art. no. 00-092-10 | SW 3,5 mm, Length: 273 mm



Screw measuring device bent (2-piece)

Art. no. 367-115 | Length: 232 mm, angle: 135°



Tray Ribbeck Slim Cup (empty)

Art.-no. 367-182

Tray lid

Art.-no. 452-013

Drilling gauge

Art. no. 367-165 | ø 3,2 mm, Length: 185 mm



Flexi-Drill flexible drill

Art. no. 367-1316 | ø 3,2 mm, with small AO connector , Length: 100 mm



Cup inserter

Art. no. 506-400 | Length: 304 mm



PE impactor heads with O-ring

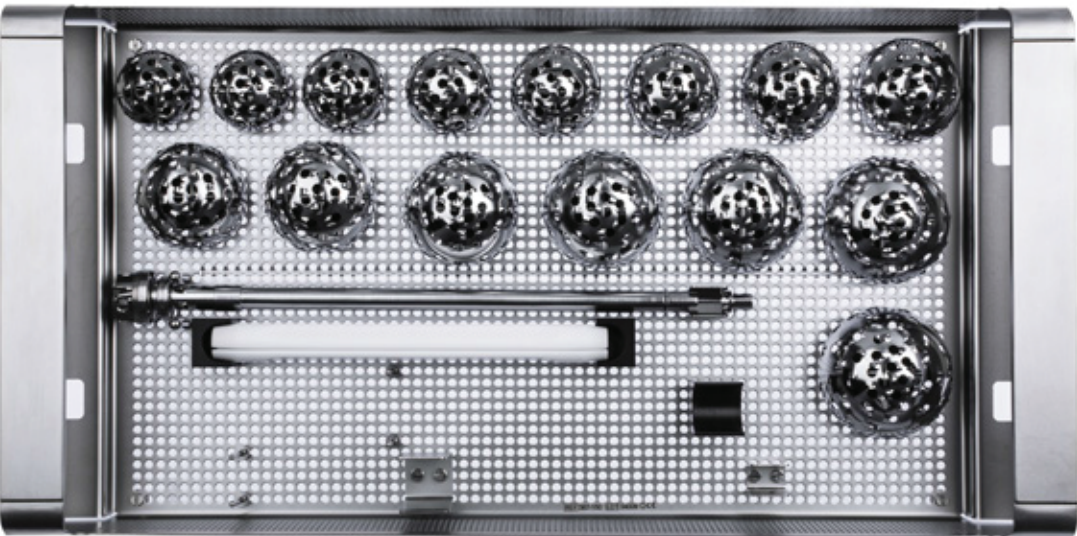


PE impactor heads for PE Inlay with O-ring

Size	Art. no.
ø 22 mm	00-091-22
ø 28 mm	00-091-28
ø 32 mm	00-091-32
ø 36 mm	00-091-36

Art. no. 367-147

Instrument Set Acetabulum Reamer



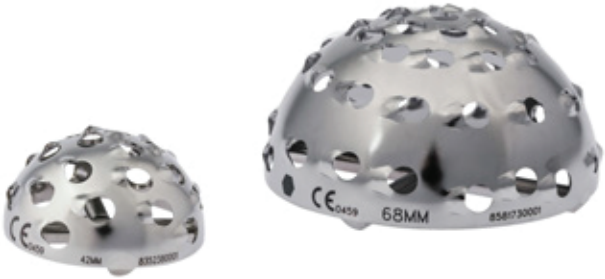
Prima Straight with AO connector (2-piece)

Art. no. 506-516



Acetabulum reamer

42-74 mm



Acetabulum reamer

Size	Art. no.
ø 42 mm	506-515
ø 44 mm	506-501
ø 46 mm	506-502
ø 48 mm	506-503
ø 50 mm	506-504
ø 52 mm	506-505
ø 54 mm	506-506
ø 56 mm	506-507
ø 58 mm	506-508
ø 60 mm	506-509
ø 62 mm	506-510
ø 64 mm	506-511
ø 66 mm	506-512
ø 68 mm	506-513
ø 70 mm	506-514
ø 72 mm	506-517
ø 74 mm	506-518

Tray Acetabulum Reamer (empty)

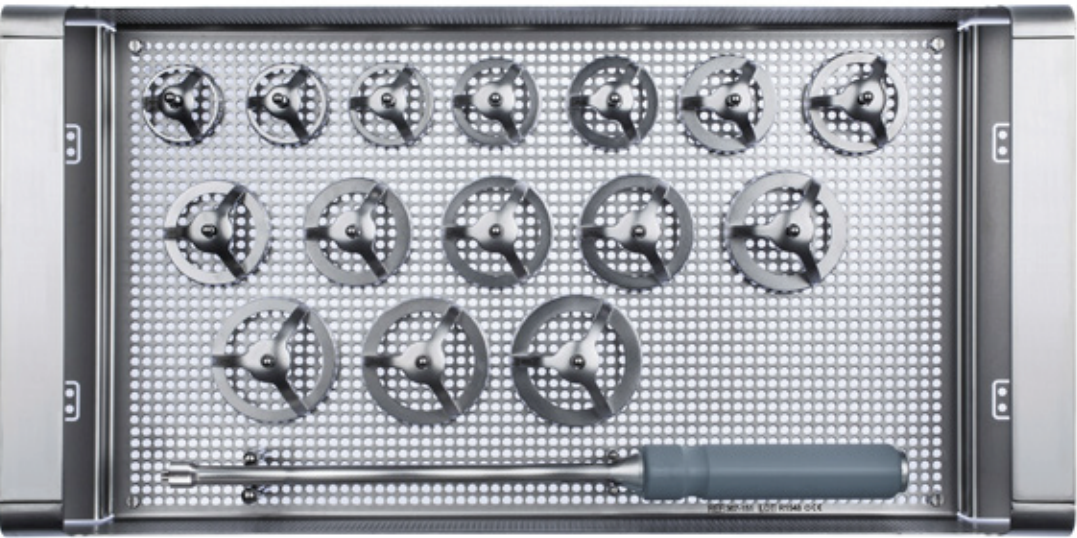
Art.-no. 367-150

Tray lid

Art.-no. 452-013

Art. no. 367-148

Instrument Set Equatorial Size Tester



Handle for size tester
Art. no. 600-300 | with M8 thr ead



Equatorial size tester
42–74 mm, with M8 thread



Size	Art. no.
ø 42 mm	506-313
ø 44 mm	506-314
ø 46 mm	506-315
ø 48 mm	506-316
ø 50 mm	506-317
ø 52 mm	506-318
ø 54 mm	506-319
ø 56 mm	506-320
ø 58 mm	506-321
ø 60 mm	506-322
ø 62 mm	506-323
ø 64 mm	506-324
ø 66 mm	506-325
ø 68 mm	506-326
ø 70 mm	506-327
ø 72 mm	506-331
ø 74 mm	506-332

Tray Equatorial Size Tester (empty)
Art.-no. 367-151

Tray lid
Art.-no. 452-013



E- mail info@biodynamicsmedical.com
URL www.biodynamicsmedical.com

Disclaimer

This product brochure is intended exclusively for specialists in medical technology.

It is not meant as information for medical lay persons. The explanations about the products contained in the brochure are general explanations and do not constitute medical advice.

The product information was created and compiled by medical experts and technically qualified employees of Biodynamics to the best of their knowledge.

Liability or guarantee for the timeliness, accuracy and completeness of the information provided in this brochure is not assumed. Any liability for material or immaterial damages caused by the use of this information is excluded.